

GENERAL NOTES

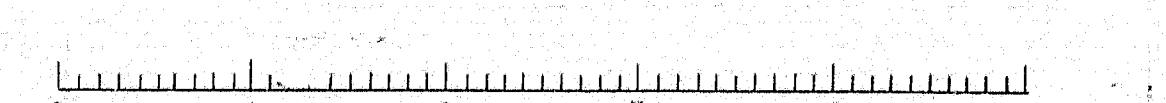
ALL FIELD CONNECTIONS TO BE HIGH STRENGTH BOLTS.

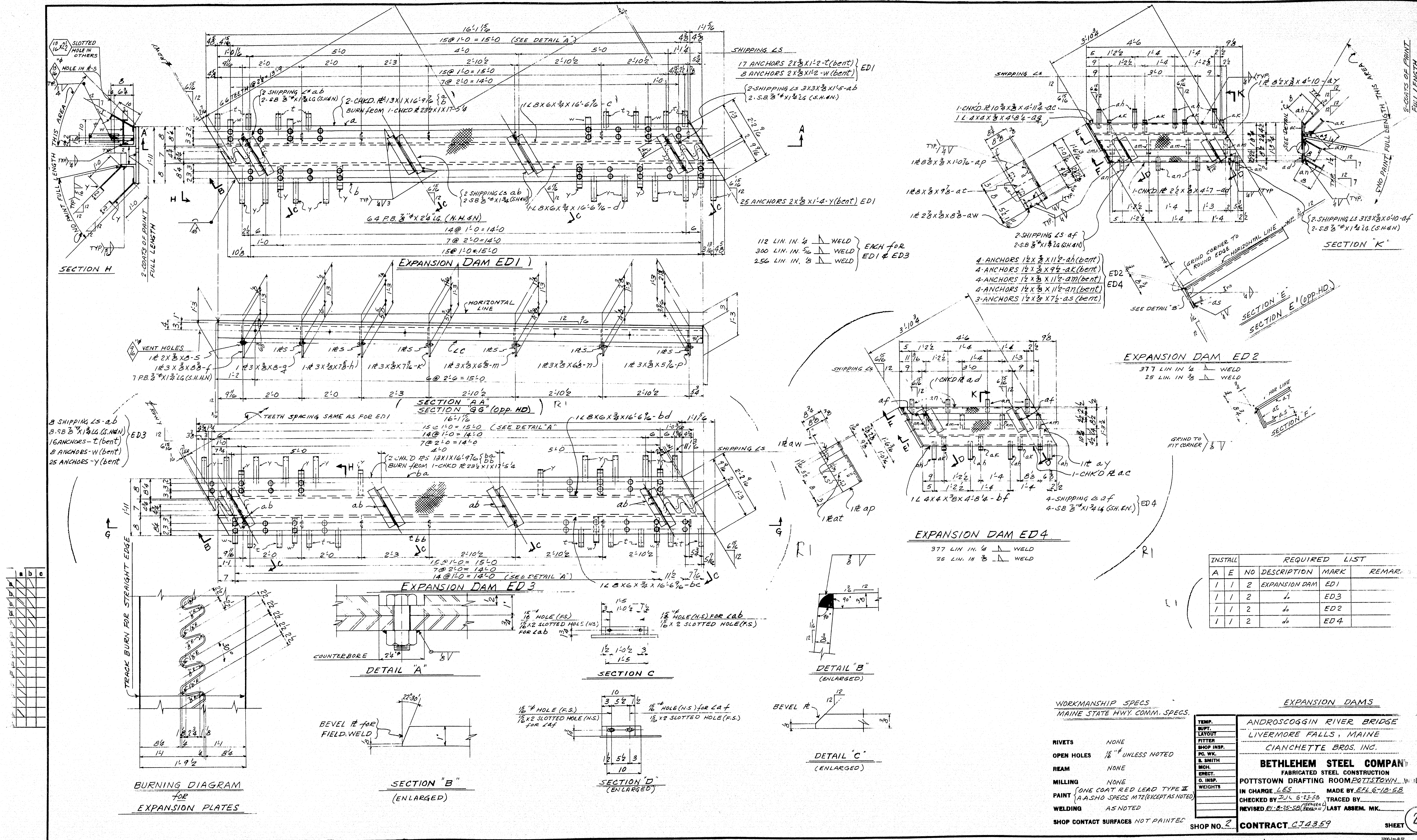
ERECTION BY OTHERS,

- RIVETS
- OPEN HOLES
- REAM
- MILLING
- PAINT
- WELDING
- SHOP CONTACT SURFACES

TEMP.	ANDROS CO. & SONS, RIVER BRIDGE
BUPT.	LIVERMORE FALLS, MAINE
LAYOUT	CLARENCE, BRIS. INC.
FITTER	
SHOP INSP.	
PC. WL.	
B. SMITH	
MCH.	
ERECT.	
O. INSP.	
WEIGHTS	
IN CHARGE	LES
CHECKED BY	MADE BY RAK
REVISED	TRACED BY
	LAST ASSEM. MK.
SHOP NO.	CONTRACT CT4359
	SHEET 11

70:159





INSTALL		REQUIRED LIST		
A	E	NO	DESCRIPTION	REMARKS
1	1	2	EXPANSION DAM ED1	
1	1	2	" ED3	
1	1	2	" ED2	
1	1	2	" ED4	

WORKMANSHIP SPECS
MAINE STATE HWY. COMM. SPECS

EXPANSION DAMS

ANDROSCOGGIN RIVER BRIDGE
LIVERMORE FALLS, MAINE
CIANCHETTE BROS. INC.

BETHLEHEM STEEL COMPANY
FABRICATED STEEL CONSTRUCTION
POTTSTOWN DRAFTING ROOM, POTTSTOWN, PA.

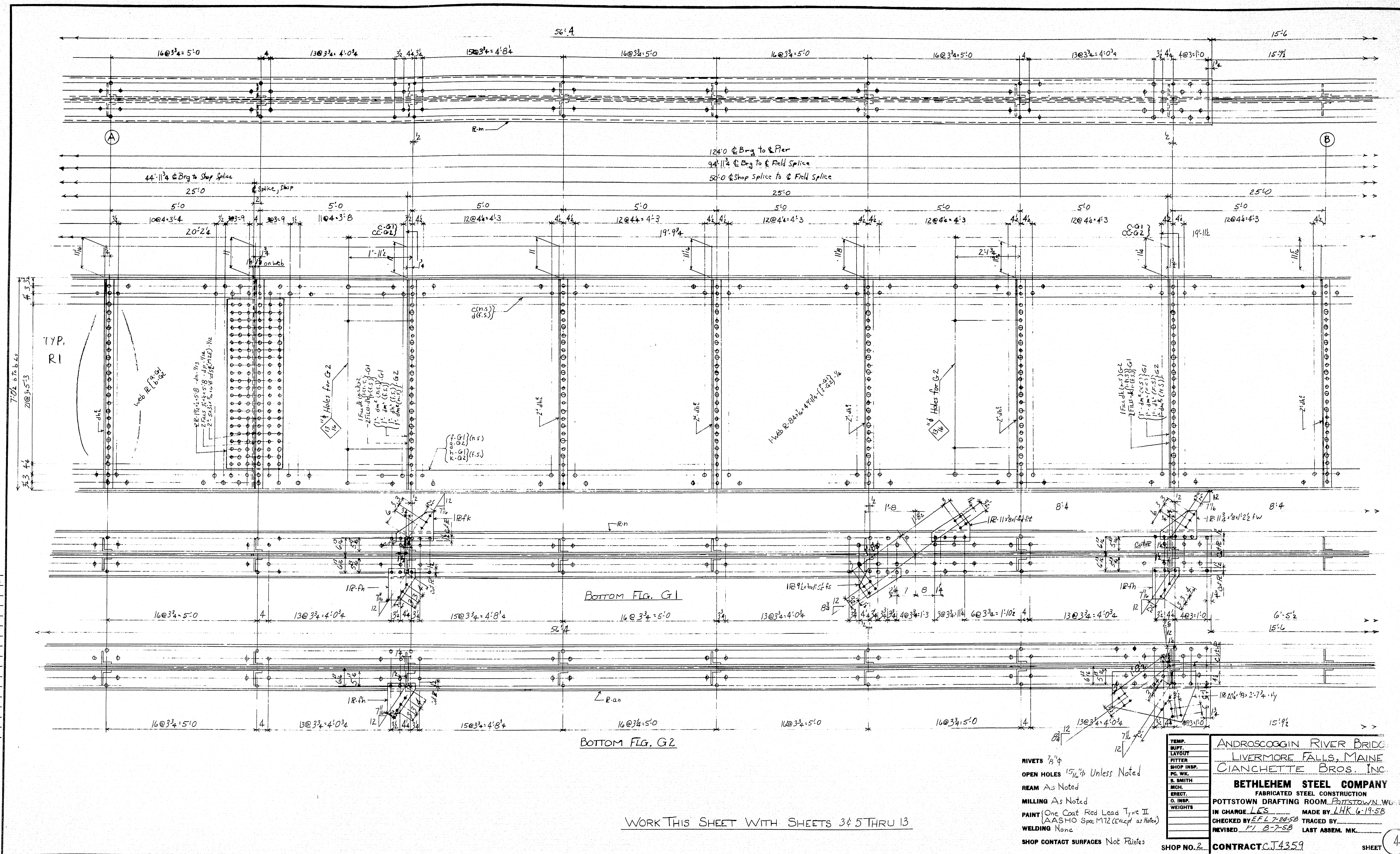
IN CHARGE LES MADE BY EFL 6-12-58
CHECKED BY JAL 6-23-58 TRACED BY
REVISED BY 8-25-58 (REWORK) LAST ASSEM. MK.

SHOP NO. 2 CONTRACT 014359

TEMP. SUPPLY LAYOUT FITTER SHOP INSP. PD. WEL. S. SMITH WELD. ENGR. O. INSP. WEIGHTS

RIVETS NONE
OPEN HOLES 1/2" UNLESS NOTED
REAM NONE
MILLING NONE
PAINT ONE COAT RED LEAD TYPE II A.A.SHO SPECS MTR (EXCEPT AS NOTED)
WELDING AS NOTED
SHOP CONTACT SURFACES NOT PAINTED

2000-1m-5.97

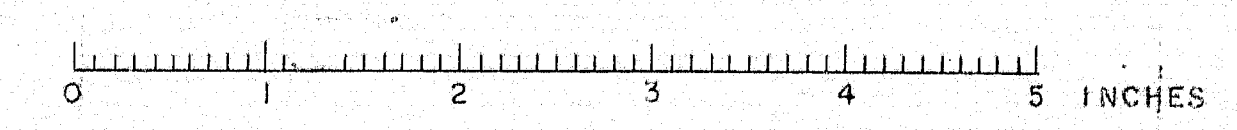


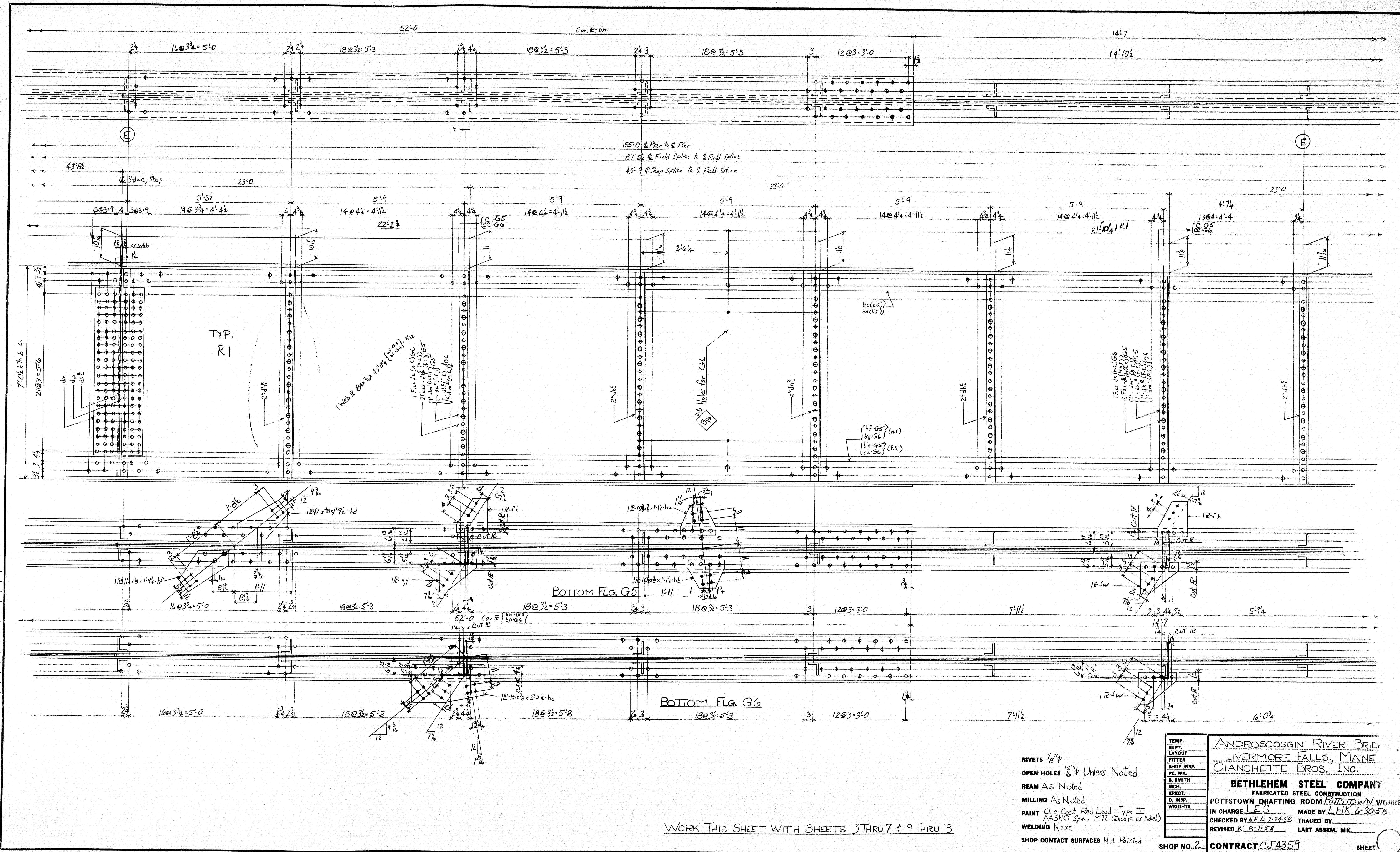
WORK THIS SHEET WITH SHEETS 3 & 5 THRU 13

- RIVETS 3/8"
- OPEN HOLES 1 5/16" Unless Noted
- REAM As Noted
- MILLING As Noted
- PAINT One Coat Red Lead Type II (AASHO Spec M172 (Except as Noted))
- WELDING None
- SHOP CONTACT SURFACES Not Finished

TEMP.	AS NOTED
DRYING	AS NOTED
LAYOUT	AS NOTED
FITTER	AS NOTED
SHOP INSP.	AS NOTED
P.C. WK.	AS NOTED
E. SMITH	AS NOTED
WCH.	AS NOTED
DRCT.	AS NOTED
O. INSP.	AS NOTED
WEIGHTS	AS NOTED

ANDROSCOGGIN RIVER BRIDGE
LIVERMORE FALLS, MAINE
CIANCHETTE BROS. INC.
BETHLEHEM STEEL COMPANY
FABRICATED STEEL CONSTRUCTION
POTTSTOWN DRAFTING ROOM, POTTSTOWN, N.J.
IN CHARGE LES
CHECKED BY EFL 7-20-58
REVISED BY B-7-58
MADE BY LHK 6-19-58
TRACED BY
LAST ASSEM. MK.
SHOP NO. 2 CONTRACT C-4359

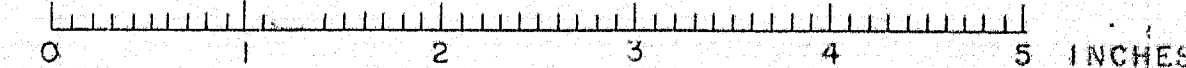


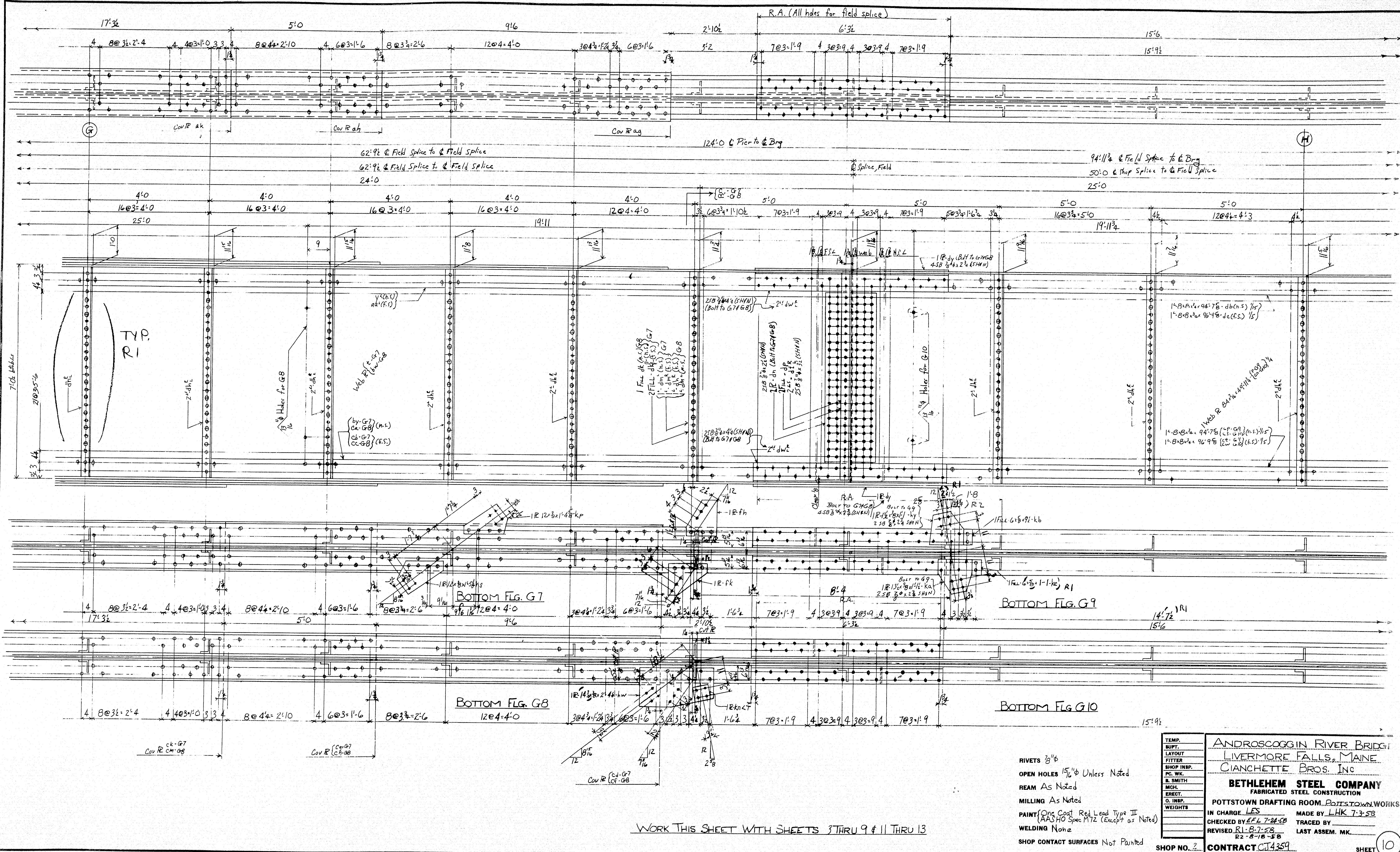


RIVETS $7/8"$
OPEN HOLES $1 5/16"$ Unless Noted
REAM As Noted
MILLING As Noted
PAINT One Coat Red Lead Type II
AASHO Specs M72 (except as Noted)
WELDING N=no
SHOP CONTACT SURFACES Not Painted

TEMP.	ANDROSCOGGIN RIVER BRIDGE
BUILT	
LAYOUT	LIVERMORE FALLS, MAINE
FITTER	CIANCHETTE BROS. INC.
SHOP (INSP.)	
P.C. WK.	
E. SMITH	BETHLEHEM STEEL COMPANY
MCH.	FABRICATED STEEL CONSTRUCTION
ERECT.	POTTSTOWN DRAFTING ROOM, PITTSBURGH, PA.
O. INSP.	IN CHARGE L. E. S. MADE BY L. H. K. 6-30-58
WEIGHTS	CHECKED BY E. L. T. 7-24-58 TRACED BY
	REVISED R. L. B. 8-8. LAST ASSEM. MK.

70-167





RIVETS 3/8"

OPEN HOLES 1 1/2" Unless Noted

REAM As Noted

MILLING As Noted

PAINT (One Coat Red Lead Type II
(AASHTO Spec M72 (Except as Noted)

WELDING None

SHOP CONTACT SURFACES Not Painted

TEMP. SUPT.	ANDROSCOGGIN RIVER BRIDGE
LAYOUT FITTER	LIVERMORE FALLS, MAINE
SHOP INSP.	CIANCHETTE BROS. Inc
PC. NO.	
B. SMITH	
MCH.	
ERECT.	
O. TEMP.	
WEIGHTS	
POTTSTOWN DRAFTING ROOM. POTTSTOWN, WORKS	
IN CHARGE. LES	MADE BY LHK 7-3-58
CHECKED BY EFL 7-24-58	TRACED BY
REVISED R1 8-7-58	LAST ASSEM. MK.
	R2 8-18-58
SHOP NO. 2	CONTRACT C-4359
	SHEET 10

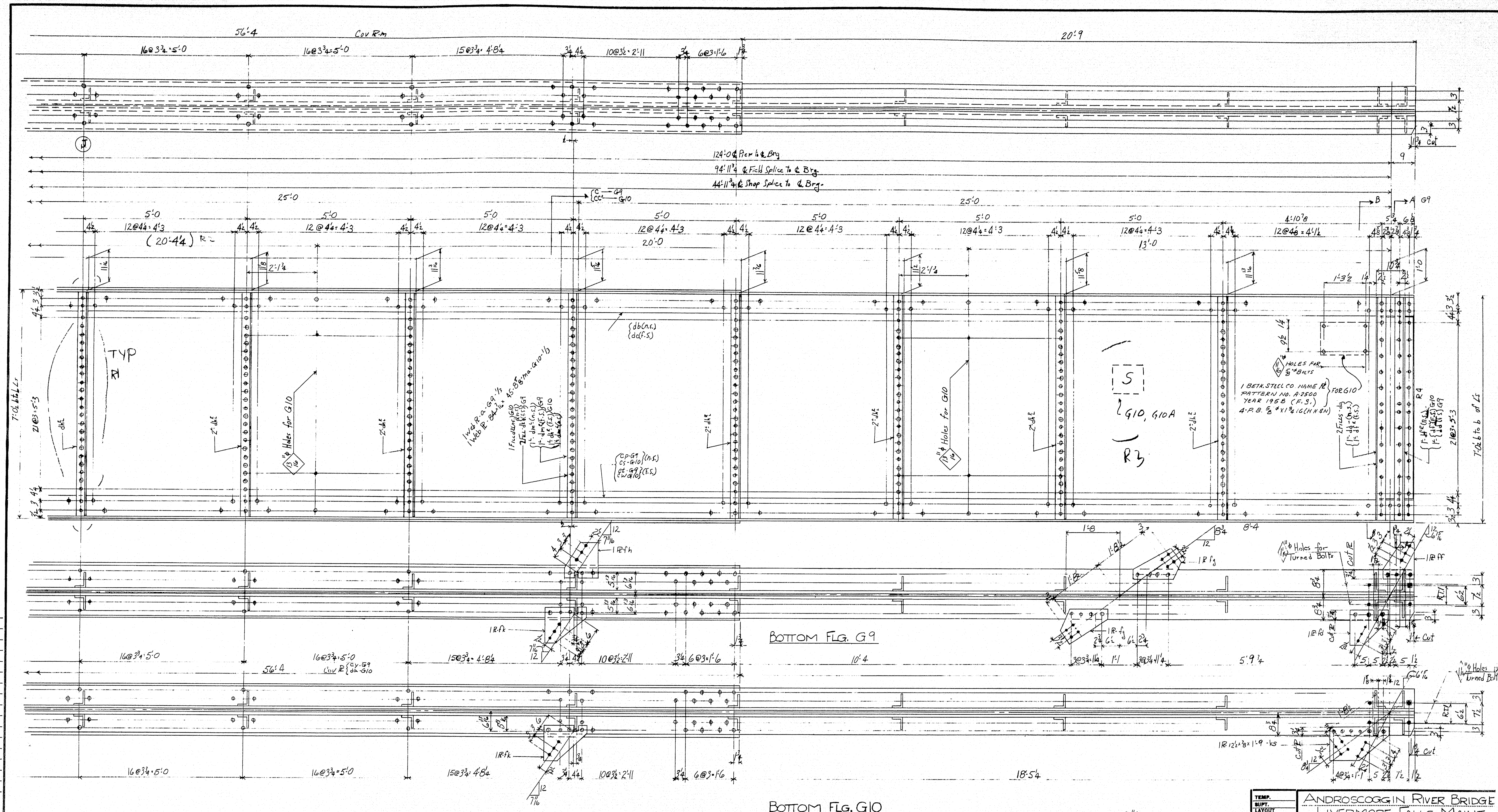
ASSEMBLY SHOP

70-169

SHEET (10

CITIZENSHIP

1
b
c
d
e
f
g
h
i
j
k
l
m
n
o
p
q
r
s
t
u
v
w
x
y



BOTTOM FLG. G9

BOTTOM FLG. G10

WORK THIS SHEET WITH SHEETS 3 THRU 11 & 13

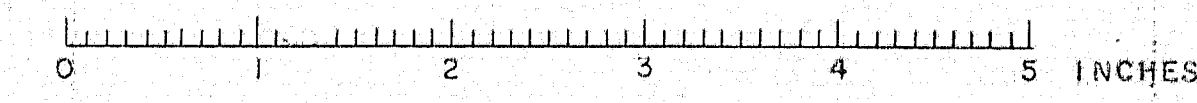
RIVETS 3/8"
OPEN HOLES 1 1/2" Unless Noted
REAM As Noted
MILLING As Noted
PAINT One Coat Red Lead Type II
AASHTO Spec. M172 Except as Noted
WELDING None
SHOP CONTACT SURFACES Not Painted

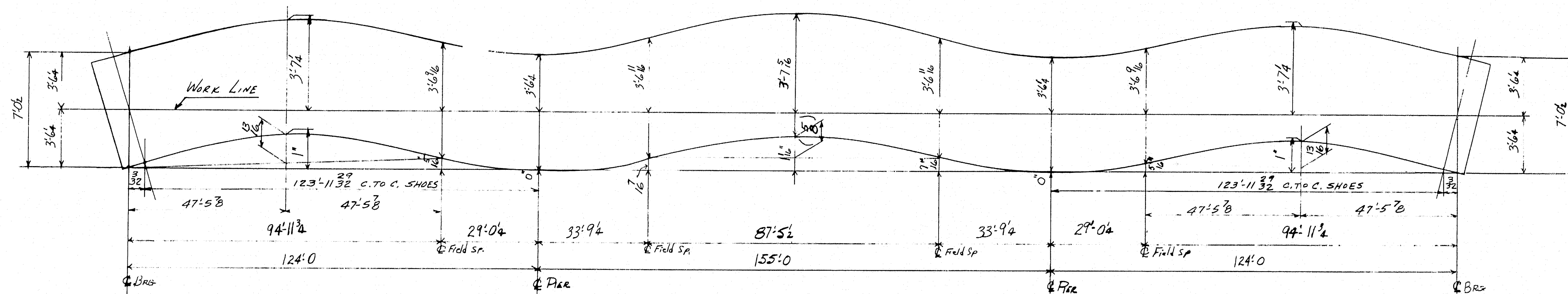
TEMP.	ANDROSCOGGIN RIVER BRIDGE
SHIFT	LIVERMORE FALLS, MAINE
LAYOUT	CIANCHETTE BROS. INC.
FITTER	
SHOP INSP.	
PG. WK.	
E. SMITH	
WCH.	
ERECT.	
O. INSP.	
WEIGHTS	

BETHLEHEM STEEL COMPANY
FABRICATED STEEL CONSTRUCTION
POTTSTOWN DRAFTING ROOM, POTTSTOWN WORKS
IN CHARGE LES MADE BY LHK 7-11-58
CHECKED BY ELL 7-24-58 TRACED BY
REVISED BY 8-17-58 8-29-58
CONTRACT 3359

ASSEMBLY SHOP 70-171

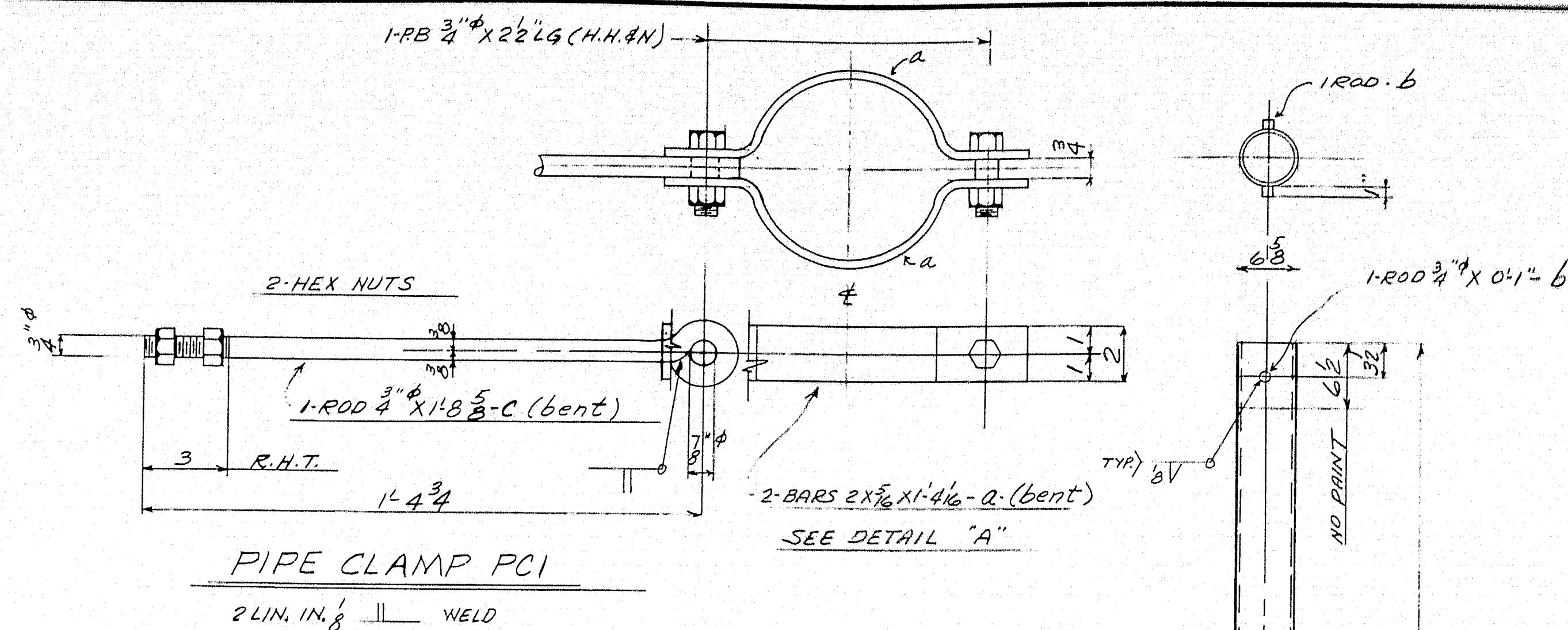
SHEET 12





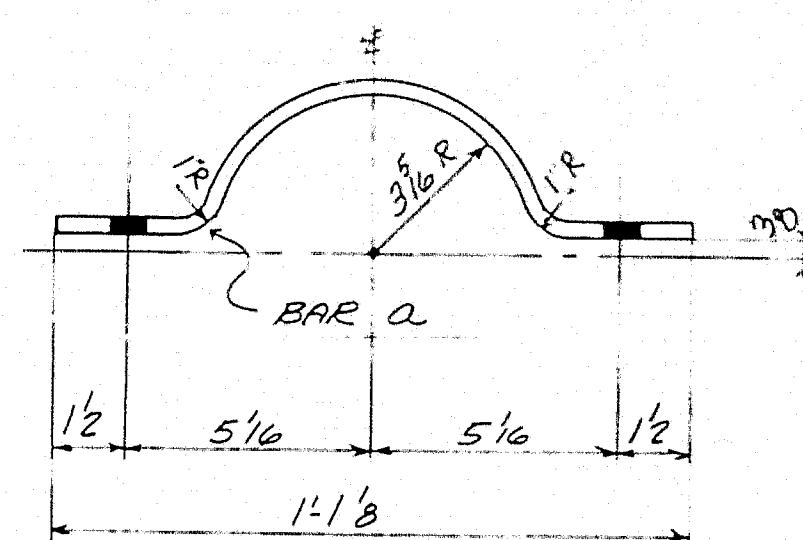
CAMBER DIAGRAM

WORK THIS SHEET WITH SHEETS 3 THRU 12



PIPE CLAMP PCI

2 LIN. IN. 8 WELD



DETAIL "A"

1-W.I PIPE 6" X 8'-0

DRAIN PIPE DPI

5 LIN. IN. 3 WELD

INSTALLMENTS					REQUIRED LIST			
A	B	C	D	E	NO	DESCRIPTION	MARK	REMARKS
10	6	8	4	10	38	DRAIN PIPE	DPI	
20	12	16	8	20	76	PIPE CLAMP	PCI	

WORKMANSHIP SPECS.
MAINE STATE HIGHWAY COMM SPEC

RIVETS NONE
OPEN HOLES 1/8"
REAM NONE
MILLING NONE
PAINT ONE COAT RED LEAD TYPE II (AASHO SPECS. M72 (EXCEPT AS NOTED))
WELDING AS NOTED

SHOP CONTACT SURFACES NOT PAINTED

DRAIN PIPE & CLAMPS

TEMP.	ANDROSCOGGIN RIVER BRIDGE
BLUFT.	LIVERMORE FALLS, MAINE
LAYOUT	CIANCHETTE BROS. INC.
FITTER	
SHOP INSP.	
PC. WK.	
B. SMITH	
MCH.	
ERECT.	
O. INSP.	
WEIGHTS	
BETHLEHEM STEEL COMPANY	
FABRICATED STEEL CONSTRUCTION	
POTTSTOWN DRAFTING ROOM, POTTSTOWN, WORKS	
IN CHARGE L.E.S.	MADE BY EFL 7-7-58
CHECKED BY L.E.S. 7/10/58	TRACED BY
REVISED	LAST ASSEM. MK.

SHOP NO. 2 CONTRACT CJA359

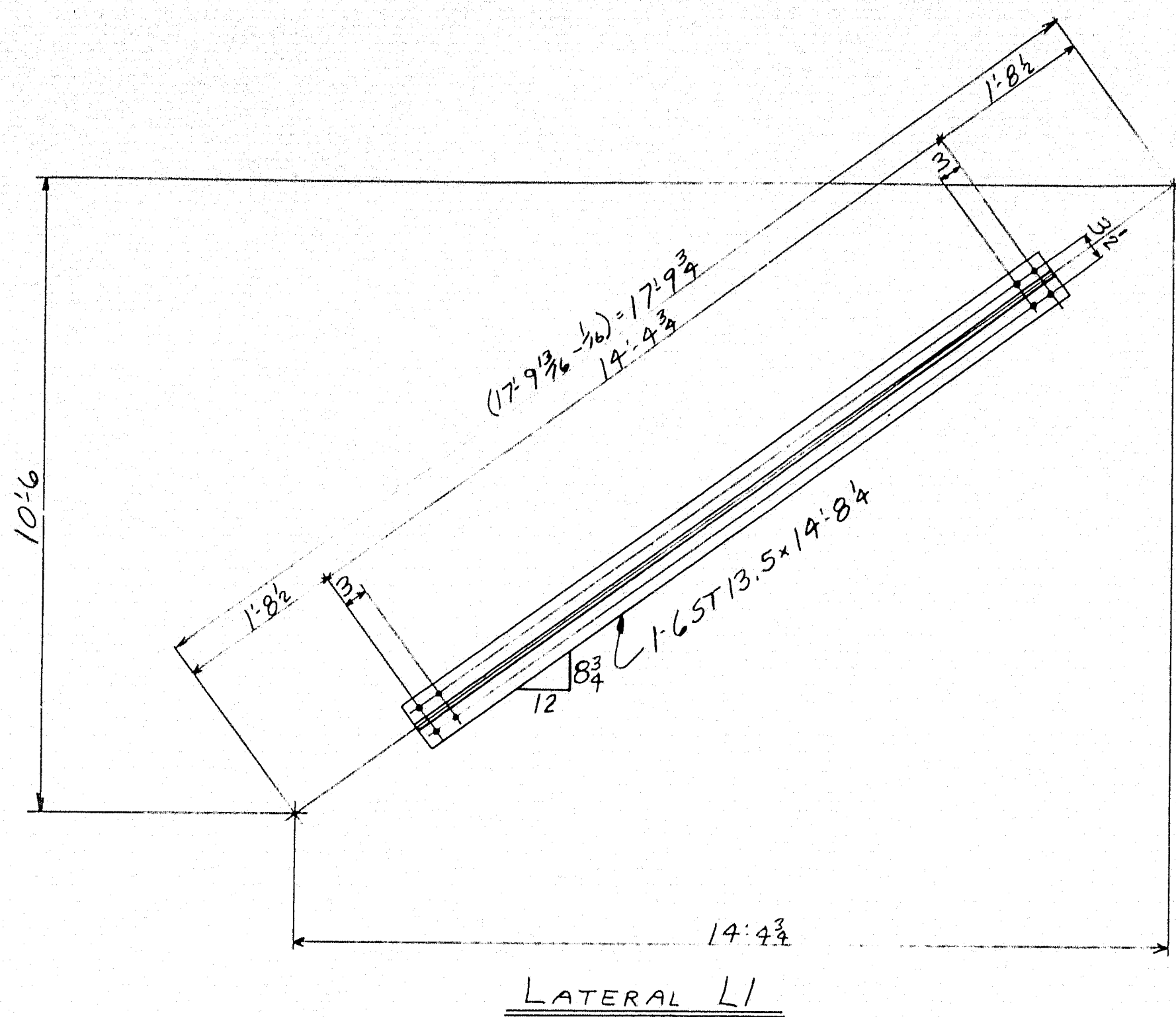
SHEET

FORGE SHOP

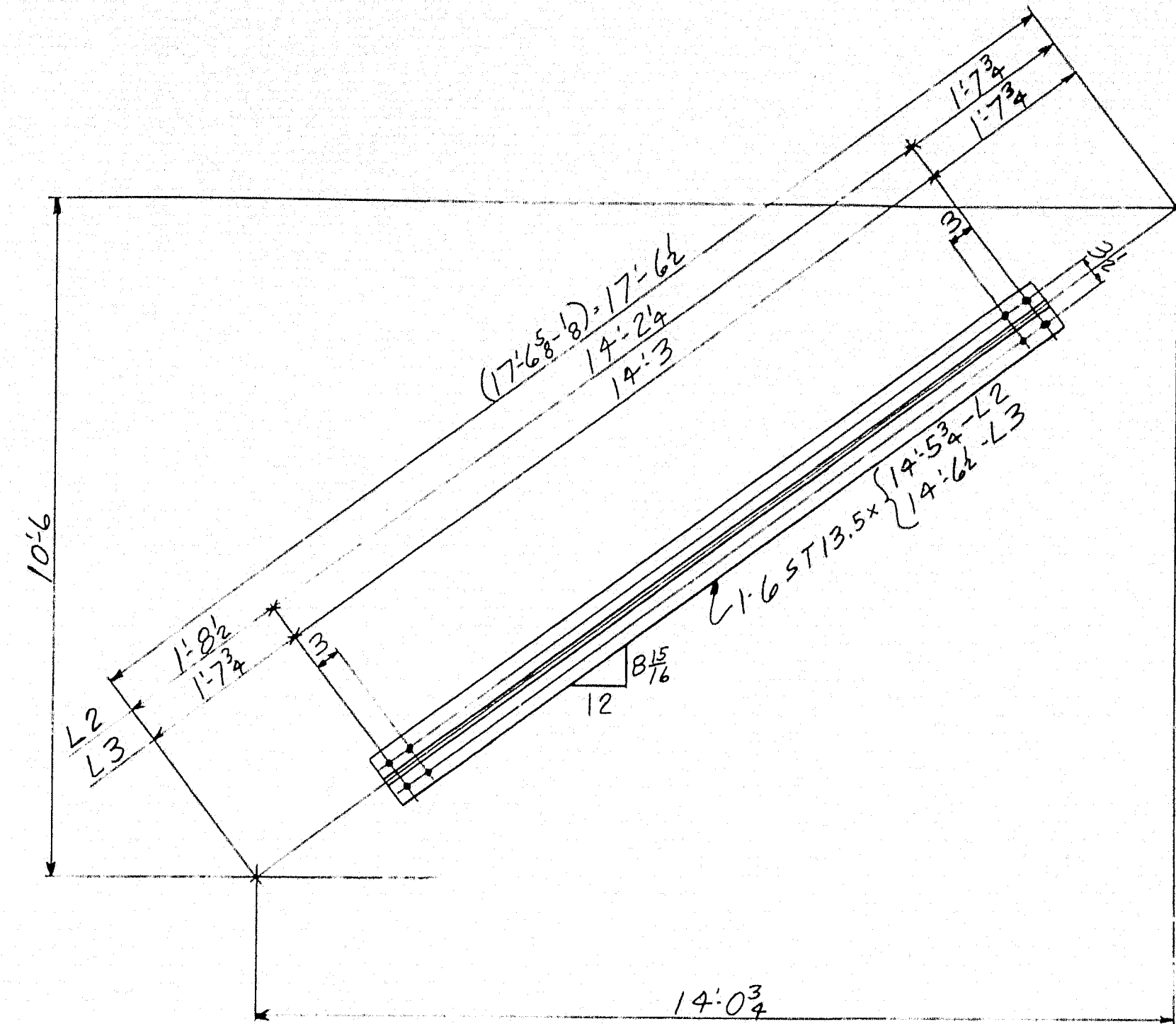
70-173

14

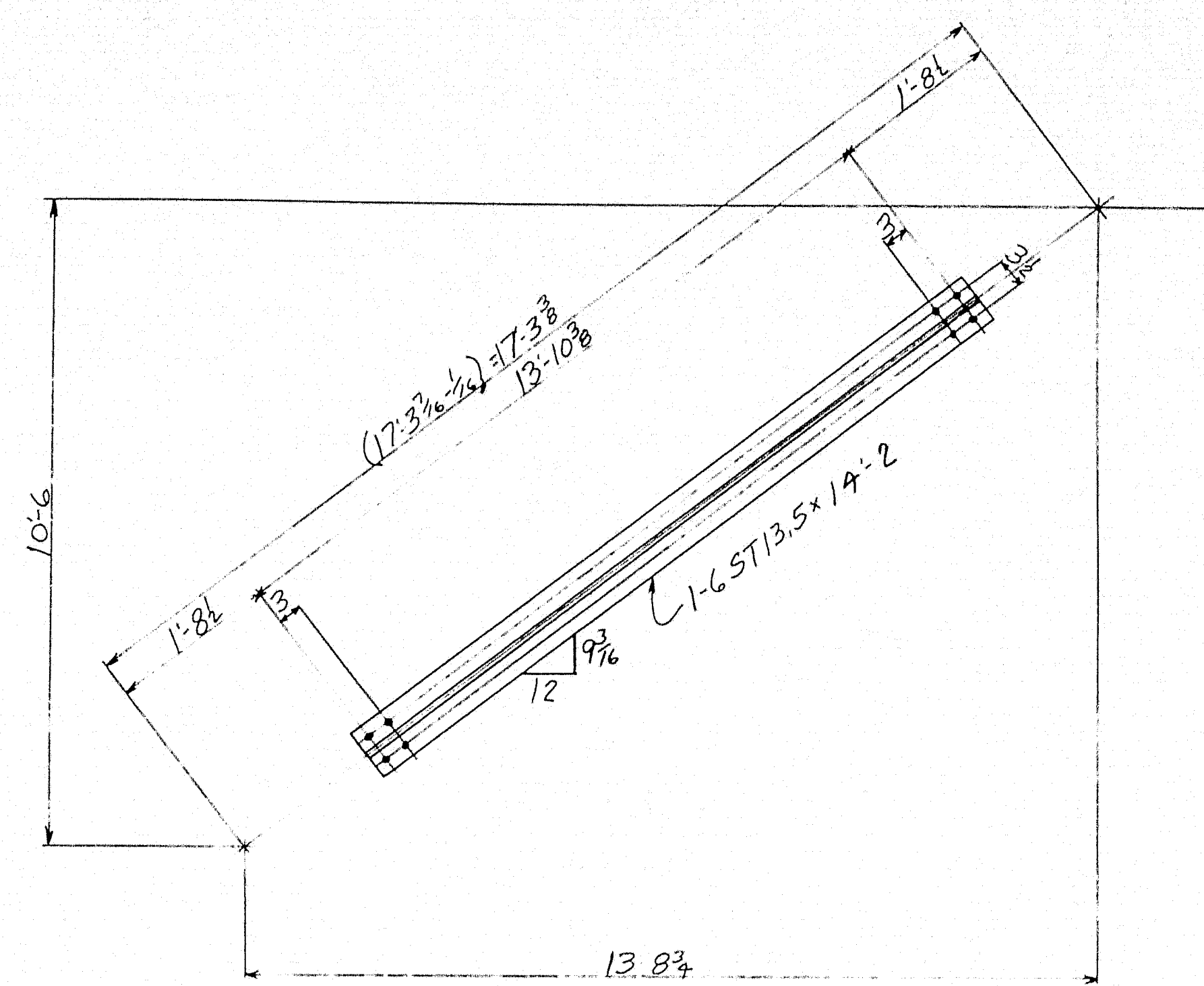
0 1 2 3 4 5 INCHES



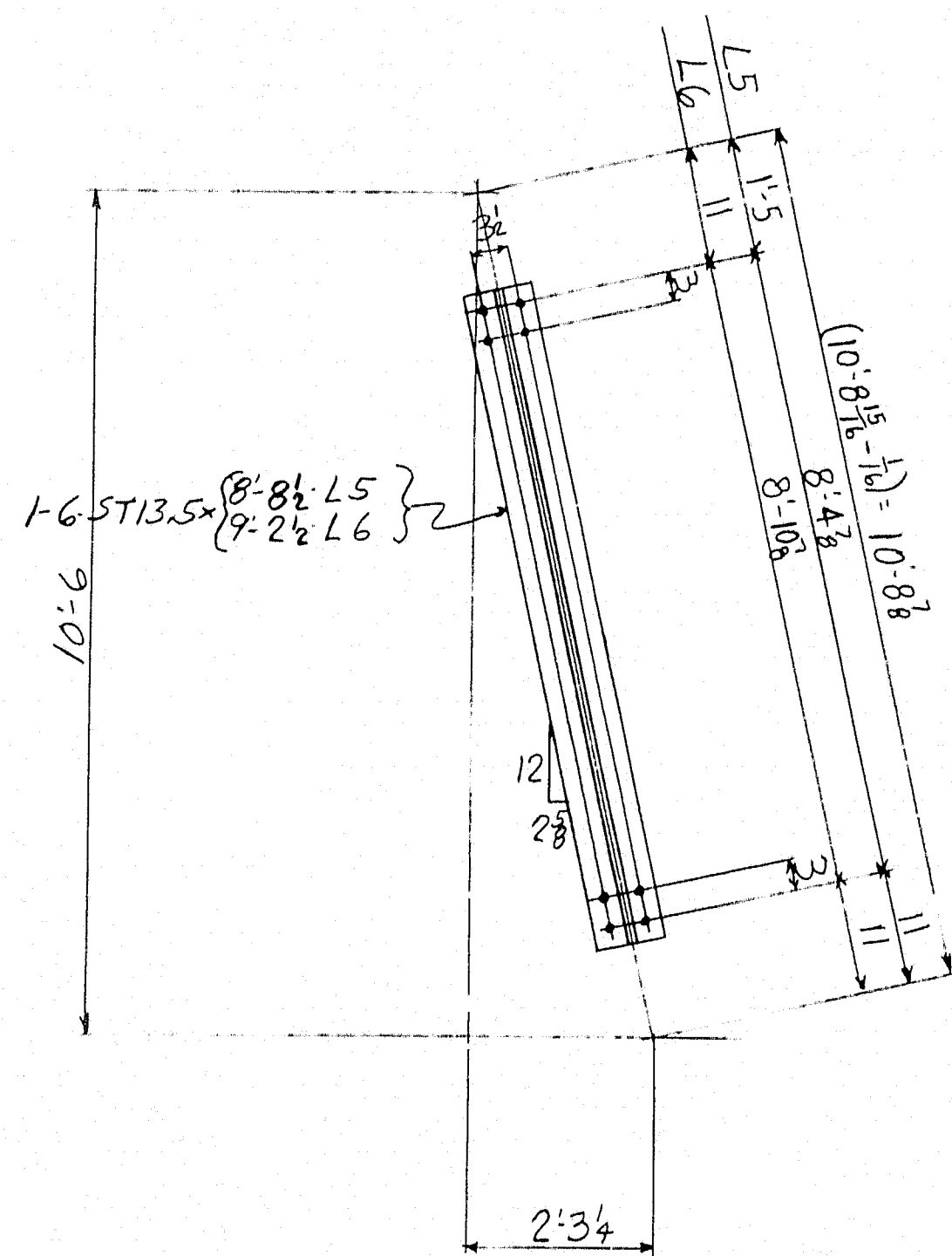
LATERAL L1



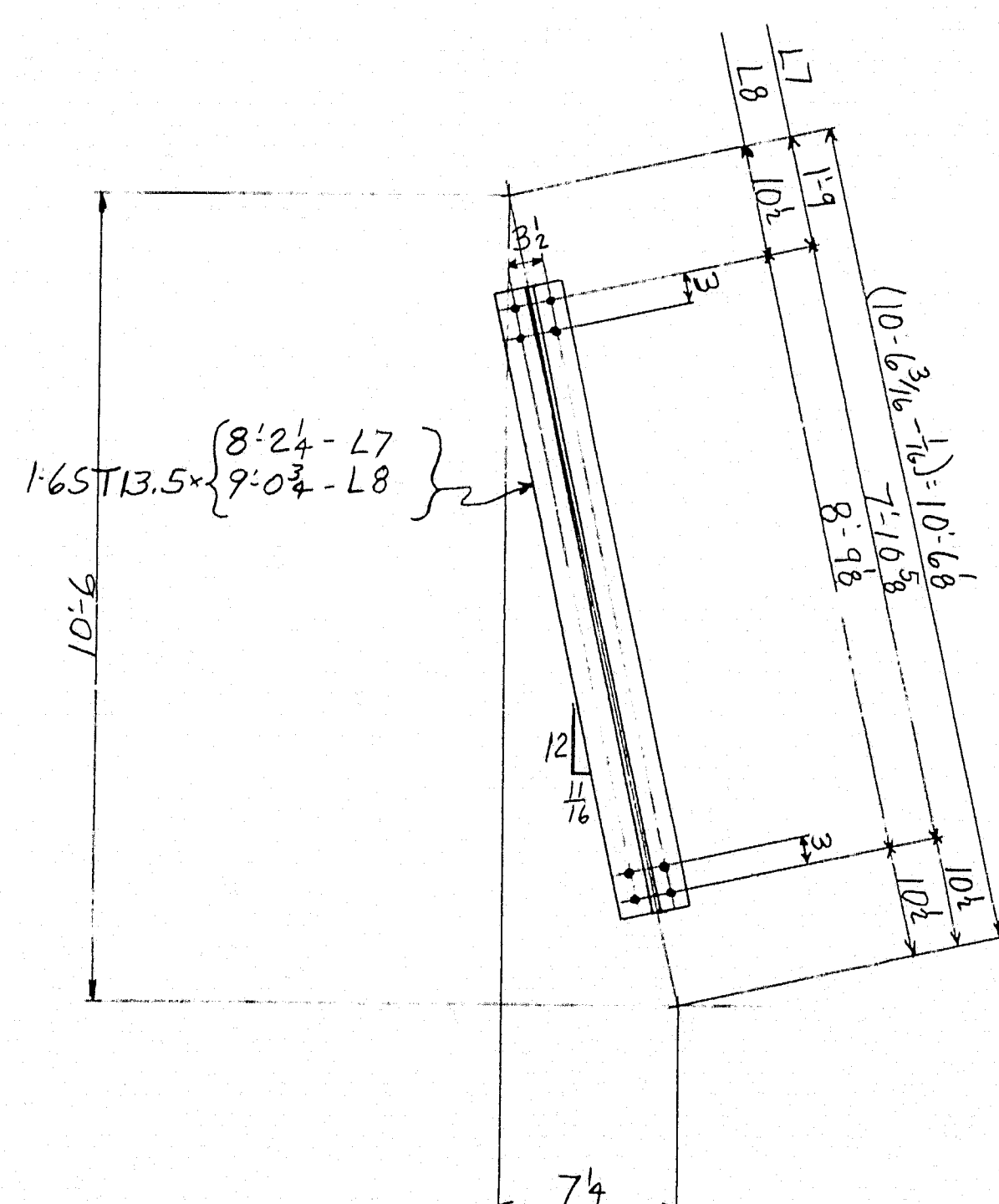
LATERALS L2, L3



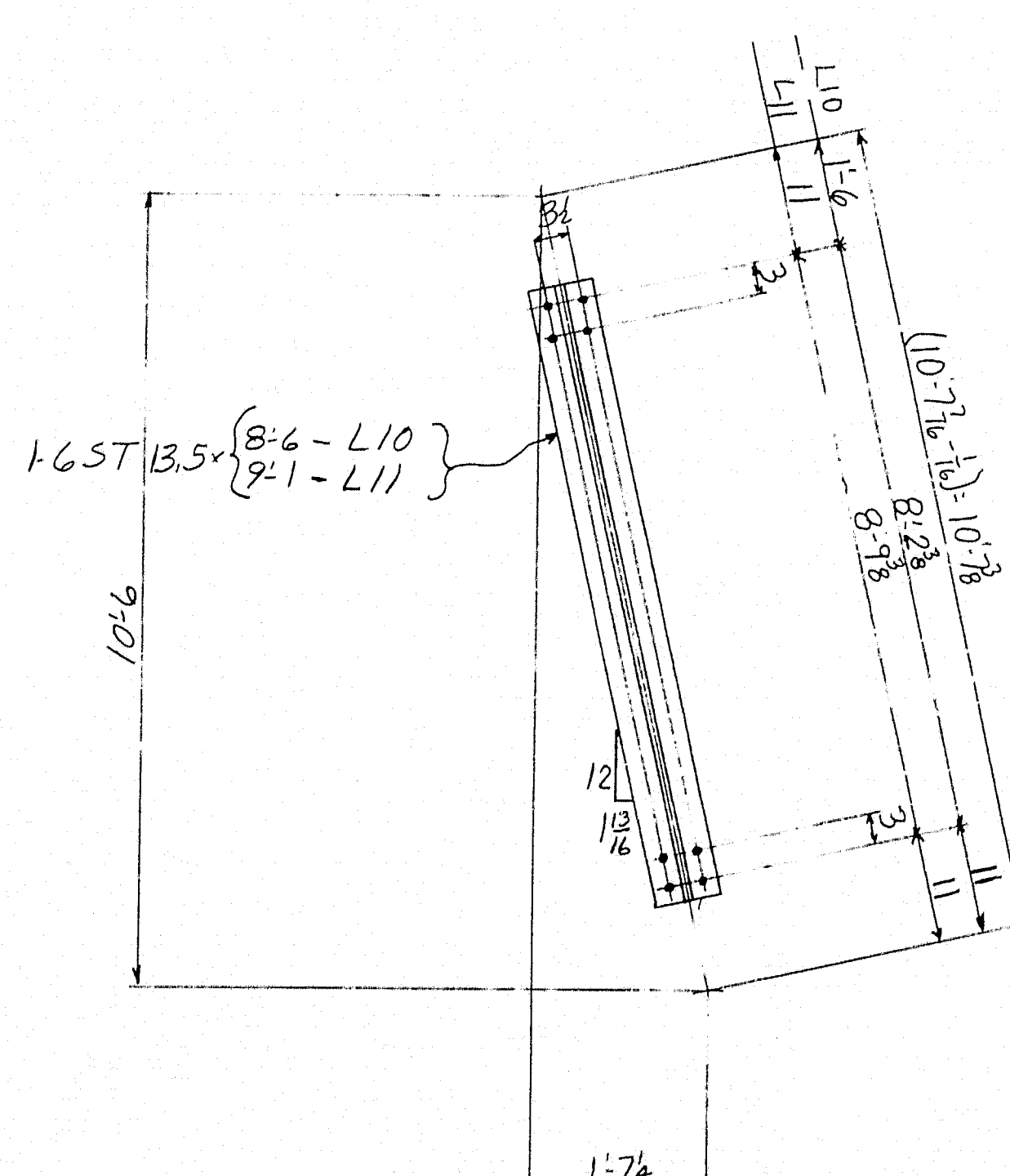
LATERAL L4



LATERALS L5-L6



LATERALS L7-L8



LATERALS L10-L11

INSTALLMENT					REQUIRED LIST			
A	B	C	D	E	No	DESCRIPTION	MARK	REMARKS
6				6	12	LATERAL	L1	
	1		1		2	do	L2	
	2		2		4	do	L3	
	3	3	3		9	do	L4	
2				2	4	do	L5	
4				4	8	do	L6	
	1		1		2	do	L7	
	2		2		4	do	L8	
		2			2	do	L10	
		4			4	do	L11	

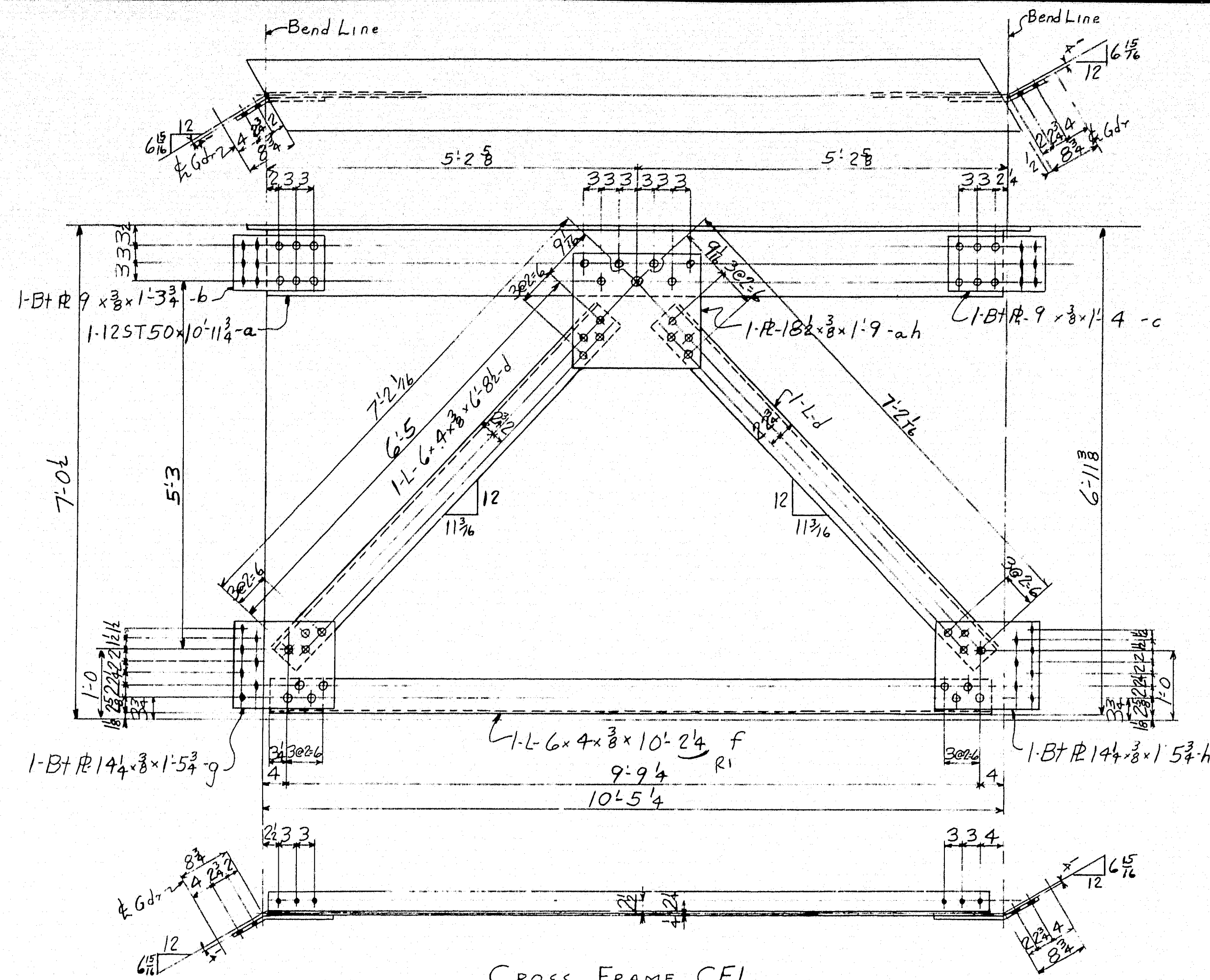
WORKMANSHIP SPECS:
MAINE STATE HWY. COMM. SPECS

LATERALS

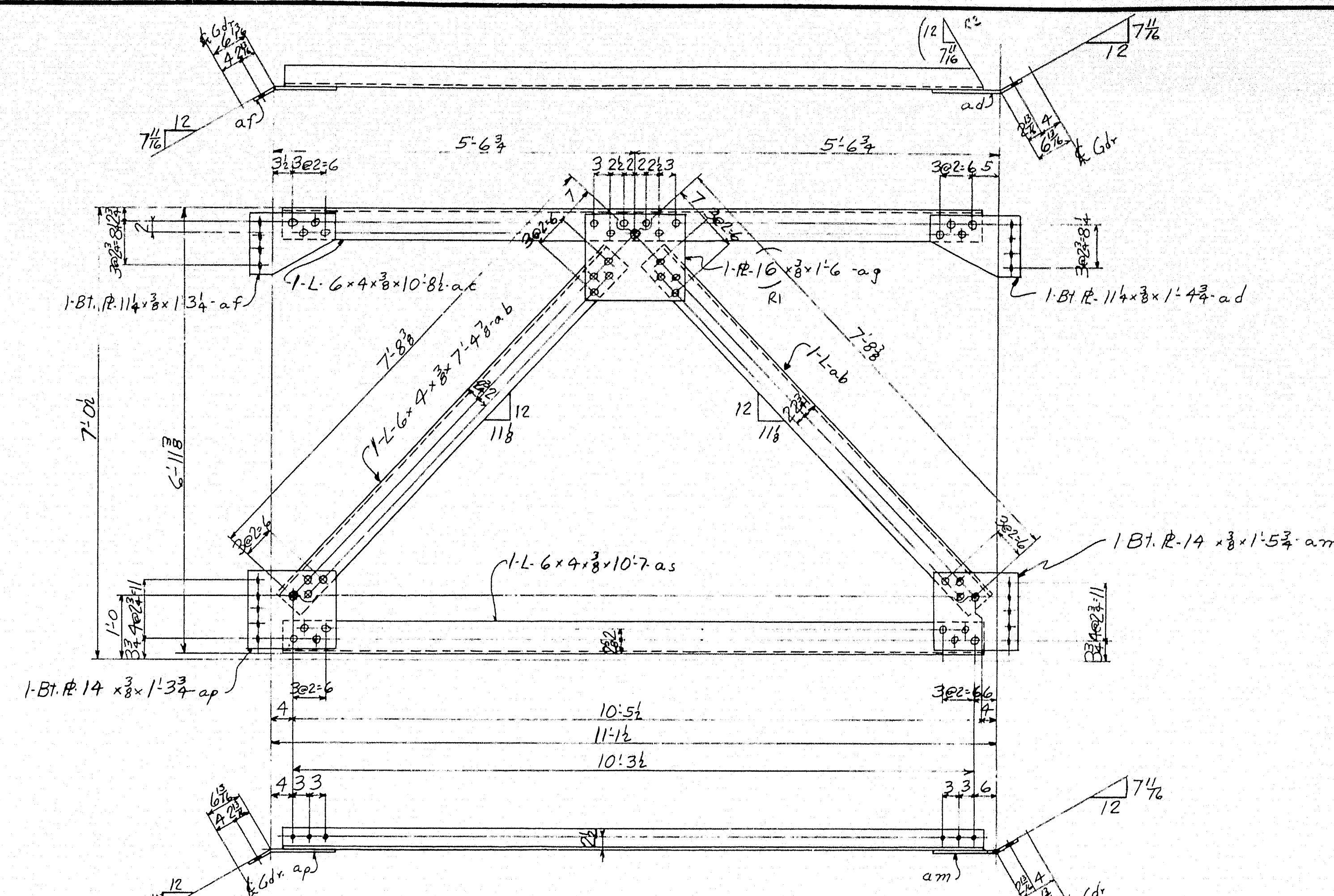
RIVETS None
OPEN HOLES 1/8" Ø
REAM None
MILLING None
PAINT One Coat of Red Lead Type II
WELDING None EXCEPT AS NOTED
SHOP CONTACT SURFACES Not Painted

TEMP.	ANDROSCOGGIN RIVER BRIDGE
SUPT.	LIVERMORE FALLS, MAINE
LAYOUT	GIANCHETTE BROS., INC.
FITTER	
PC. WEL.	
B. SMITH	
MOCH.	
ERECT.	
O. INSP.	
WEIGHTS	
IN CHARGE	L.E.S.
CHECKED BY	D.K. 7-1-58
REVISD	
LAST ASSEM. MK.	

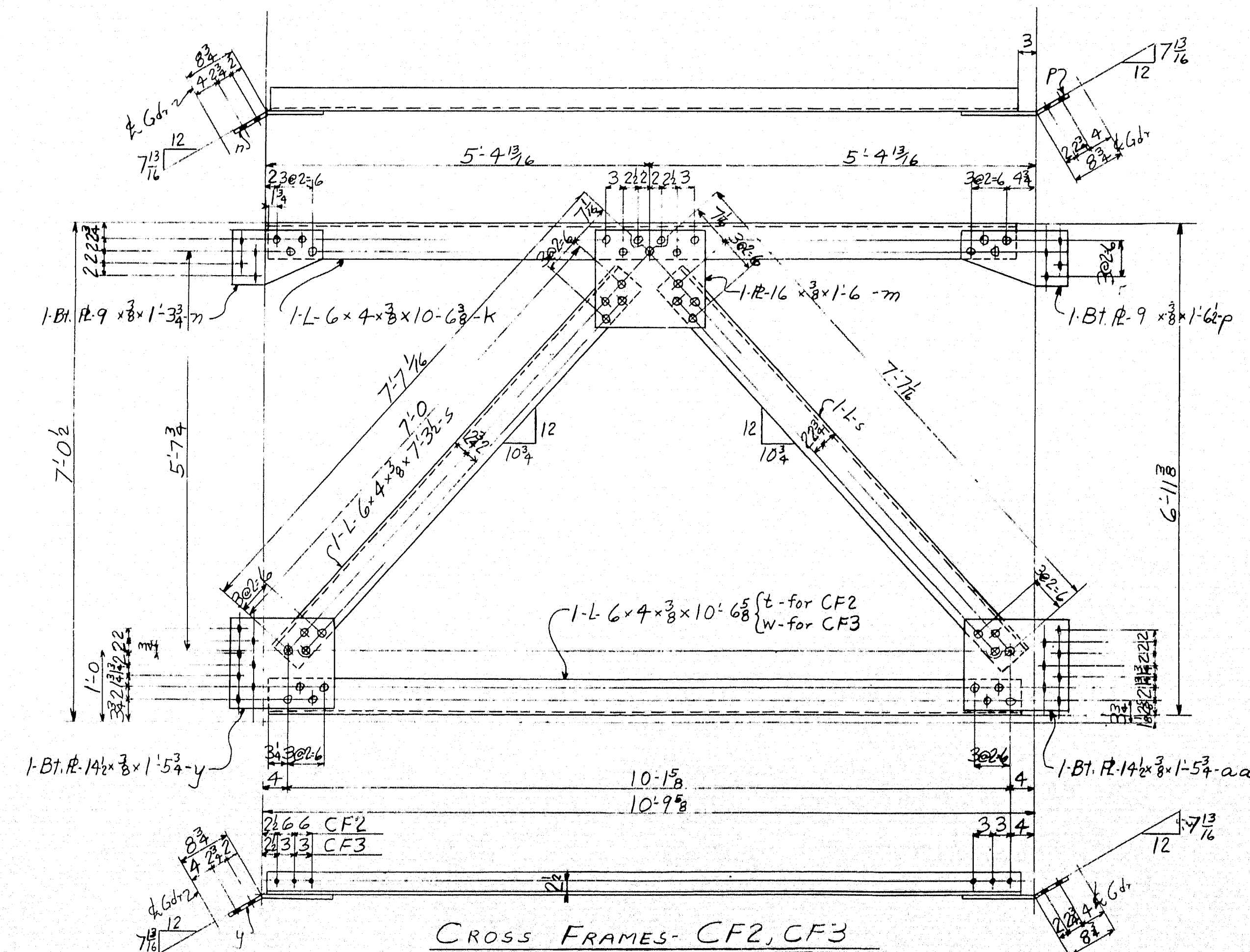
SHOP NO. 2 CONTRACT CJ4359 SHEET 15



CROSS FRAME CF1



CROSS FRAMES- CF4



CROSS FRAMES- CF2, CF3

INSTALLMENTS					REQUIRED LIST			
A	B	C	D	E	No	DESCRIPTION	MARK	REMARKS
3					6	CROSS FRAME	CF1	
	1		1		2	do	CF2	
	2		2		4	do	CF3	
9	6	12	6	9	42	do	CF4	

WORKMANSHIP SPECS
MAINE STATE HWY. COMM SPECS

RIVETS 3/8"φ
OPEN HOLES 1 5/16"φ
REAM None
MILLING None
PAINT One Coat of Red Lead Type II
WELDING None
SHOP CONTACT SURFACES Not Painted

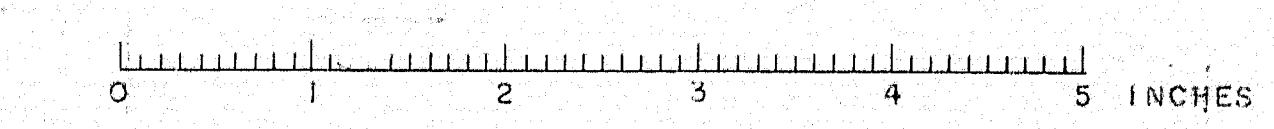
NOTE:
OPEN HOLES - NO PAINT WITHIN 3" BOTH SIDES OF ALL HOLES.

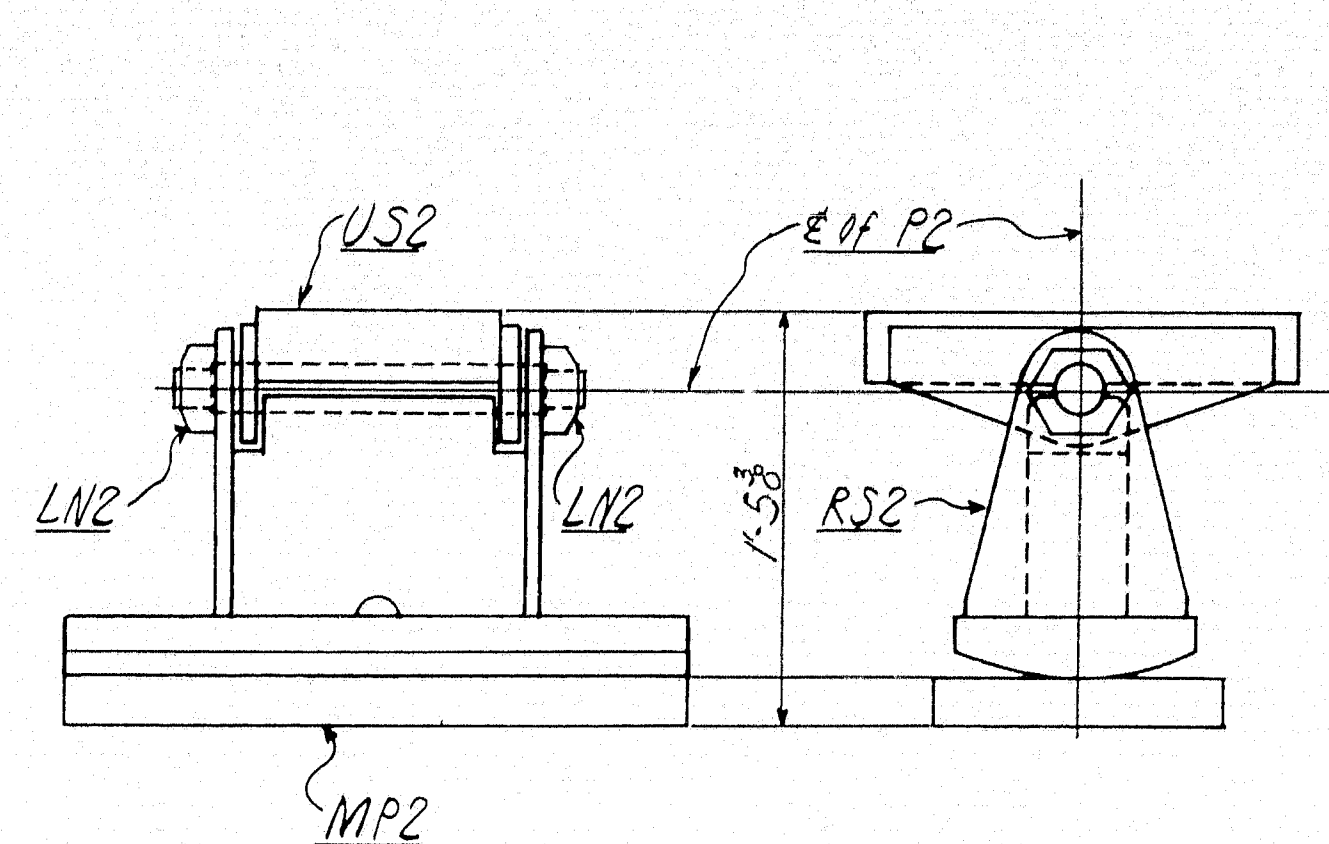
CROSS FRAMES

TEMP.	DRYING
SUPPLY	DRYING
LAYOUT	DRYING
SHOP INSP.	DRYING
PC. WK.	DRYING
INCH.	DRYING
ENGR.	DRYING
WEIGHTS	DRYING
IN CHARGE	DRYING
CHECKED BY	DRYING
REVISED	DRYING
LAST ASSEM.	DRYING
CONTRACT	DRYING

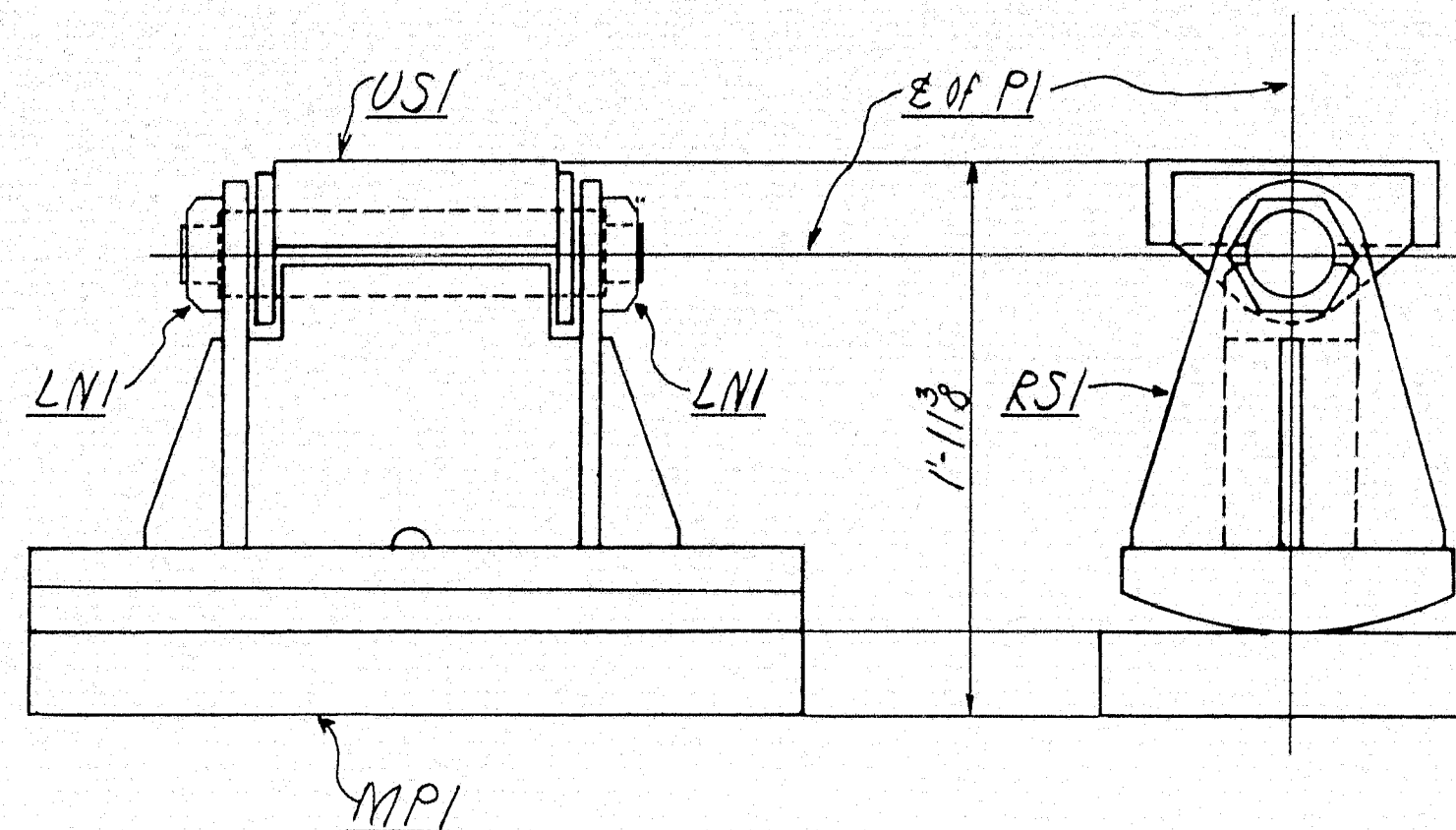
ANDROSCOGGIN RIVER BRIDGE
LIVERMORE FALLS, MAINE
CIANCHETTE BROS. INC.
BETHLEHEM STEEL COMPANY
FABRICATED STEEL CONSTRUCTION
POTTSTOWN DRAFTING ROOM
IN CHARGE LES
MADE BY W.N.L. 6-26-18
CHECKED BY D.K. 7-1-18
REVISED 8-1-18
LAST ASSEM. M.K.
CONTRACT CJ4359

70-175

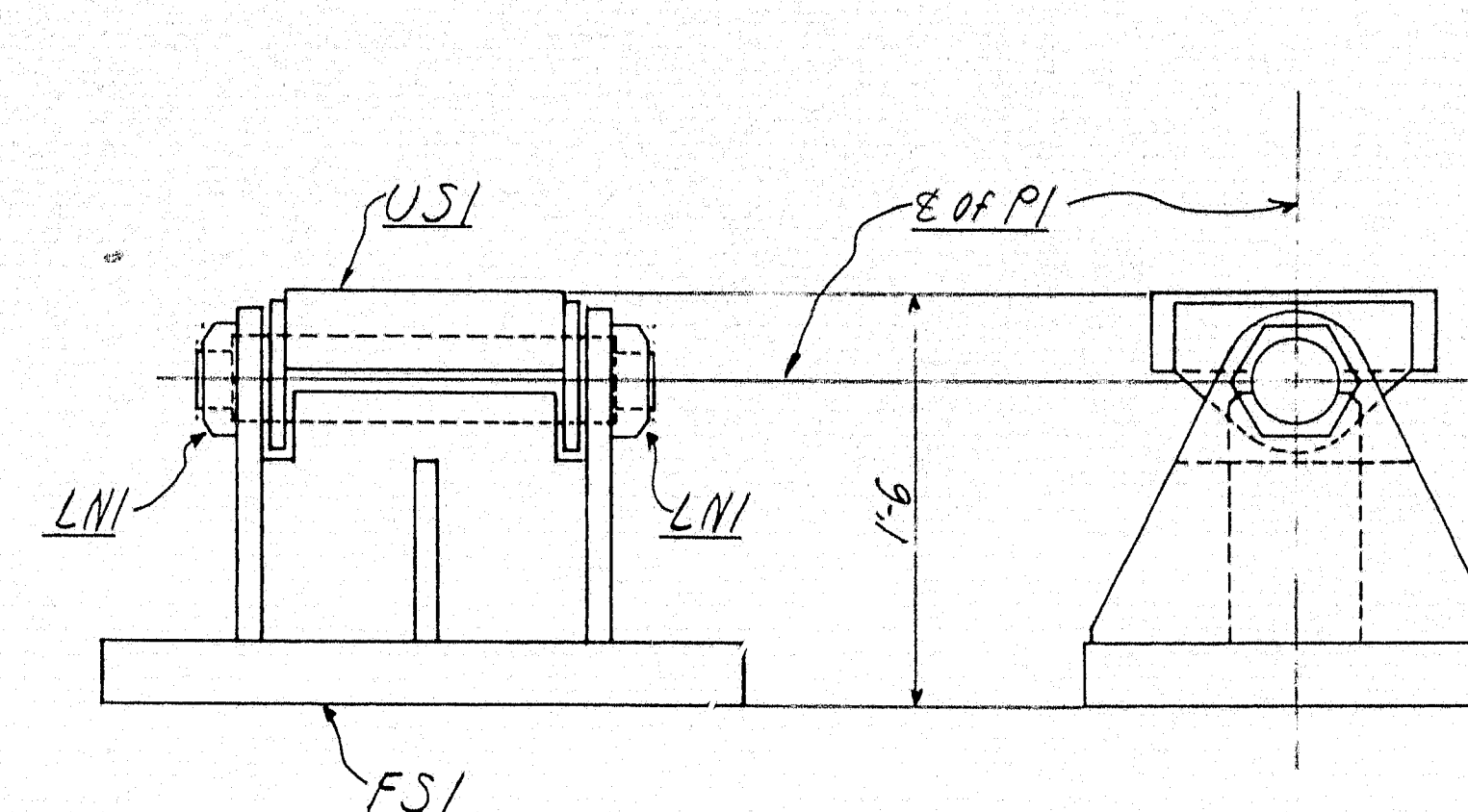




SHOE ASSEMBLY SA2
COMPOSED OF:
1-UPPER SHOE US2
1-ROCKER SHOE RS2
1-MASONRY PLATE MP2
1-PIN P2
2-LOMAS NUTS LN2



SHOE ASSEMBLY SA1
COMPOSED OF:
1-UPPER SHOE US1
1-ROCKER SHOE RS1
1-MASONRY PLATE MPI
1-PIN P1
2-LOMAS NUTS LN1



SHOE ASSEMBLY SA3
COMPOSED OF:
1-UPPER SHOE US1
1-FIXED SHOE FS1
1-PIN P1
2-LOMAS NUTS LN1

INST "S"

REQUIRED LIST			
NO.	DESCRIPTION	MARK	REMARKS
4	SHOE ASSEMBLIES	SA1	
8		SA2	
4		SA3	

FOR DETAIL OF PARTS OF SHOE ASSEMBLIES SEE DWG. #1

SHOE ASSEMBLIES

RIVETS
OPEN HOLES
REAM
MILLING
PAINT
WELDING
SHOP CONTACT SURFACES

SEE SHEET 1

TEMP.	ANDROSCOGGIN RIVER BRIDGE		
SUPP.	LIVERMORE FALLS, MAINE		
LAYOUT	CIANCHETTE BROS. INC.		
FITTER			
SHOP INSP.			
PL. WEL.			
E. SMITH			
INCH.			
ERECT.			
O. INSP.	BETHLEHEM STEEL COMPANY		
WEIGHTS	FABRICATED STEEL CONSTRUCTION		
	POTTSTOWN DRAFTING ROOM, POTTSTOWN, WORKS		
	IN CHARGE L.E.S.	MADE BY S.F.R. 6-17-58	
	CHECKED BY D.K.G. 2-23-58	TRACED BY	
	REVISED	LAST ASSEM. MK.	
SHOP NO. 2	CONTRACT CT4357		SHEET SA1

MACH. SHOP

70-176

